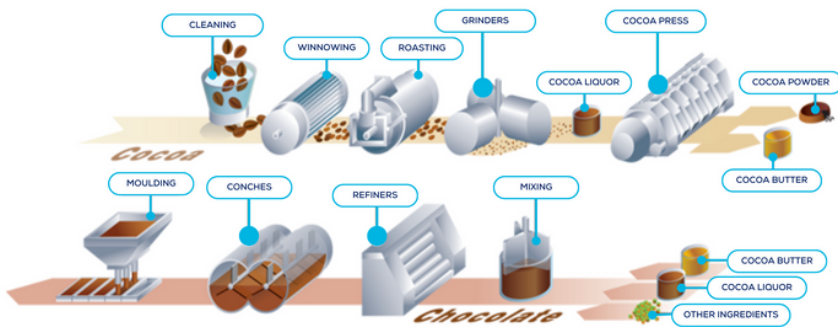


12.5% Reduction in Batch Cycle Time for Chocolate Manufacturing

BACKGROUND

During conching, a chocolate mass undergoes continuous mechanical refining and mixing. This process reduces the size of cocoa's solid particles and sugar crystals. It also gives the chocolate a smoother texture by reducing its graininess. Each batch's journey requires a specific amount of energy to create the blend for the desired product. This could include mixing, refining, temperature control, viscosity control, and flavor development.



CHALLENGE

Engineers wanted to conserve energy by reducing batch cycle time. However, they had to ensure that the quality of the main recipe—Product C—was not compromised as a result of shorter batch cycles. They wanted to create an overview of all batches, find the most efficient, and replicate the result.



INDUSTRY
Food & Beverages



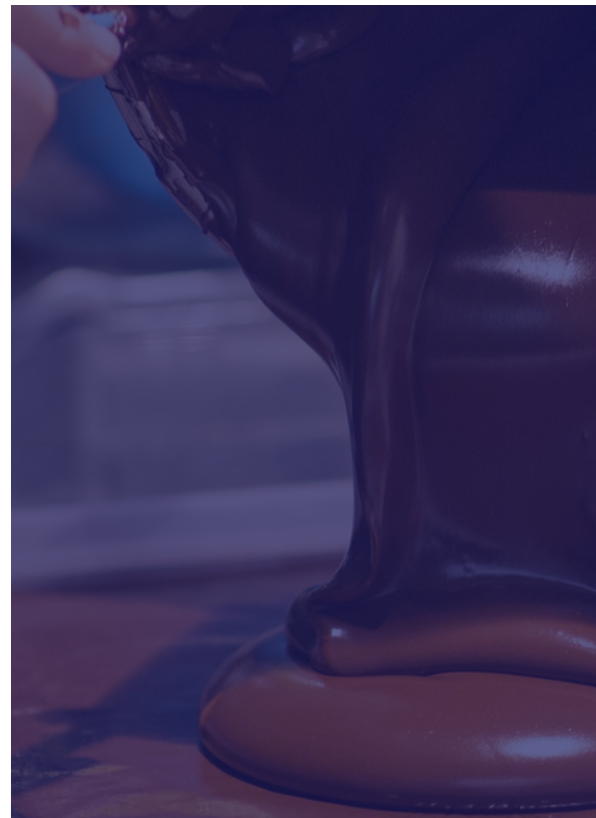
PROCESS TYPE
Batch



ASSET
Conching stage



KEY OBJECTIVE
Reduce cycle time to
conserve energy without
reducing quality



Watch the video to see
TrendMiner in action



GOAL

- Determine the reason for poor product quality in the crystallization vessels.
- Monitor for anomalies in the agitation and stirring cycles.
- Find the ideal batch cycle time to produce the best quality sugar.

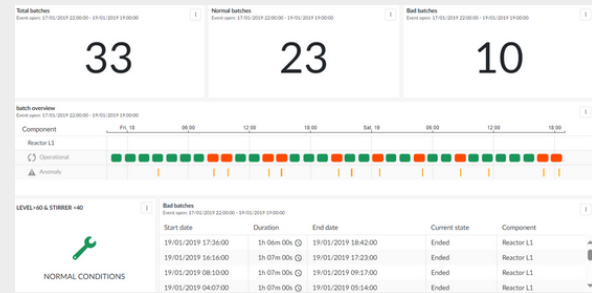
Challenges

Engineers had to overlap different batch profiles to assess the differences and potential root causes.

Approach

- Perform a value-based search to identify periods when the reactors in the vessels ran for longer than the ideal batch cycle time.
- Create a Gantt view of the agitation anomalies and color-code the longer batches to easily distinguish them from shorter batches.
- Place a live monitor tile on a dashboard to continuously track product quality through production.
- Analyze the different behaviors in each vessel to find an ideal batch.

RESULTS



- Using TrendMiner, engineers were able to find a way to distinguish between efficient batches – those that lasted less than 1 hour, 5 minutes – and less efficient batches that were longer.
- This allowed them to see that most of the quality issues happened during the 14 similar events found during the past month.
- They then were able to perform live monitoring of the stirrer speed when it fell out of range, especially when the speed fell below 60% at the pivotal production point (40 liters).
- Finally, engineers were able to pinpoint the lack of consistency during the process in the different reactors and the exact moment when the difference is made during the process.

Value

Engineers were able to minimize steam consumption, prevent sieve clogging, and realize a potential 12% reduction in batch cycle time.

TRENDMINER FEATURES USED



DATA VISUALIZATION MODE

TrendMiner offers various visualization modes for analyzing time-series data. Multiple tags can be shown in a stacked mode for specific time sequences or can be grouped together in a "swim lane." For multivariate analysis, it offers a multi-scatterplot that shows tag histograms and multiple histograms of each pair of the selected tags.



VALUE-BASED SEARCH

TrendMiner allows for an easy click and search for tags, just like using Google. While typing, our software fills best matching terms to speed up the analysis search. Value Based Search is used to quickly find anomalies in the time series data by analyzing criteria, numerical values, and limits.



LAYER COMPARE

Periods of time can be easily overlaid to compare patterns and understand how they are different. TrendMiner instantly finds similar looking patterns over multiple years of process behavior. Periods with a similar pattern can be overlaid to allow for a better understanding of the historical performance of the process.



GANTT VIEW OF CONTEXTUAL DATA

All contextual information has a start and end time that is used to represent the events in a sequence diagram or Gantt chart. Per asset, all related tags are grouped and vertically listed, and for each tag, all context types are represented in a time-series fashion.



Click below to
learn more



REQUEST LIVE DEMO



WATCH VIDEO DEMO



REQUEST PRICING



REQUEST FREE TRIAL

[MORE USE CASES YOU MAY LIKE](#)

[CUSTOMER SUCCESS STORIES](#)

[KEY CAPABILITIES WHITEPAPER](#)

[TRENDMINER VIDEO TIMELINE](#)

[INDUSTRIES SERVED](#)

[RESOURCES](#)

STAY UP TO DATE: SUBSCRIBE TO OUR NEWSLETTER

At Trendminer, we are dedicated to helping companies leverage the power of data to drive transformation and growth. We hope this document has given you new insights and ideas for how you can achieve your goals. If you have any questions or would like to learn more about our solutions, please don't hesitate to reach out. We look forward to working with you on your journey to success.