

TrendMiner

What's new in 2026.R1

Welcome to the webinar. We will start momentarily.



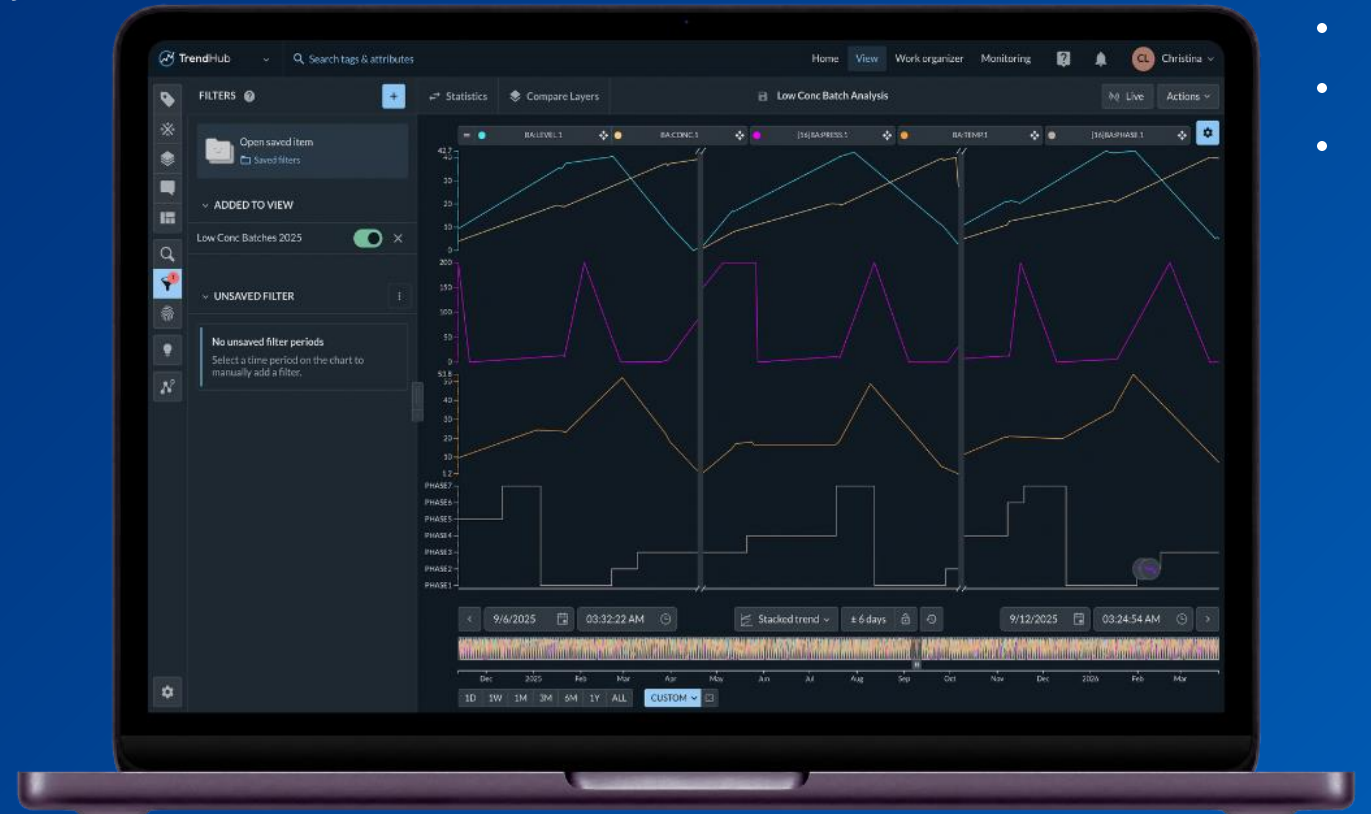
Christina Linne

Head of Product Marketing



Tim Haselaars

Product Manager





Listen only mode



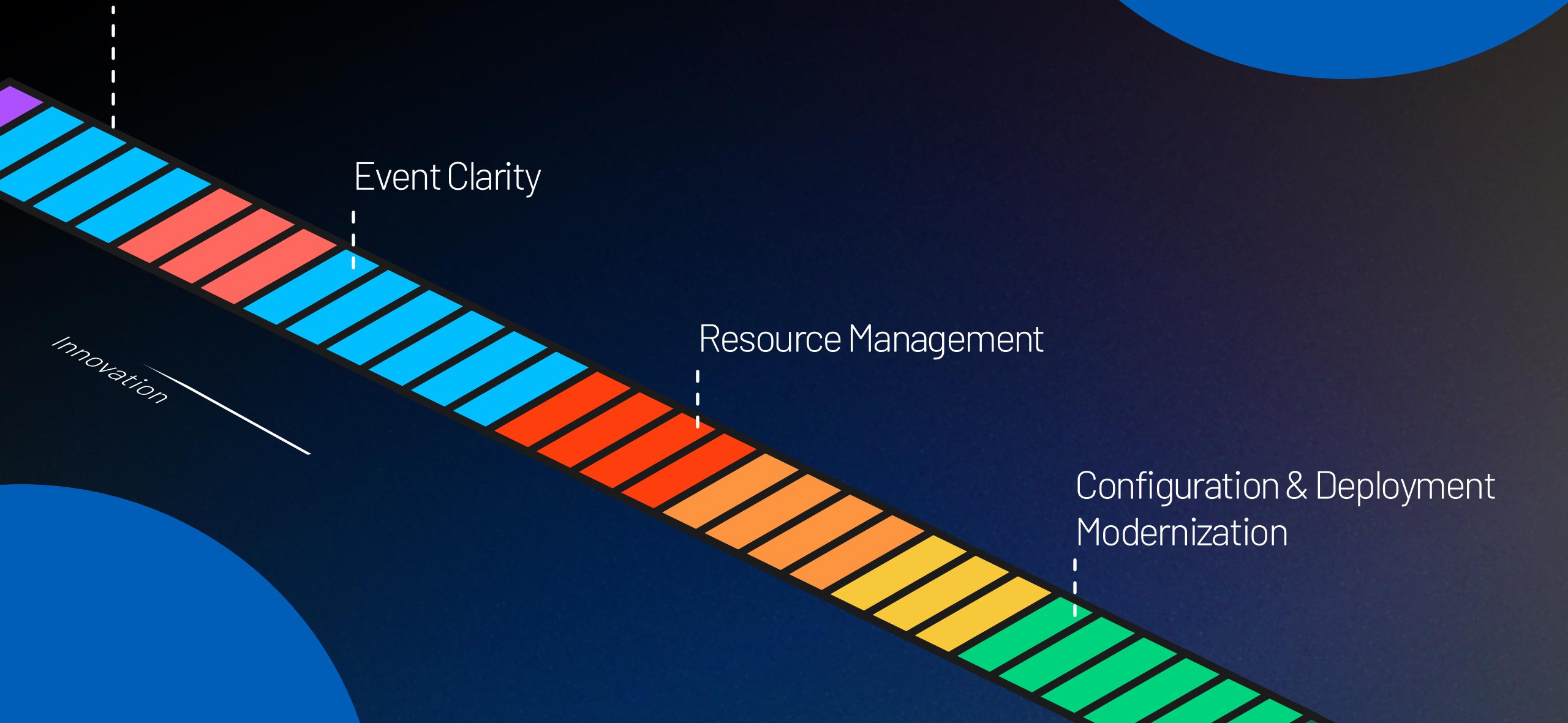
**Use the question box
in the side panel.**

Live Q&A at the end.



**Recording distributed
a day after the webinar &
slides available as
handout**

2026.R1



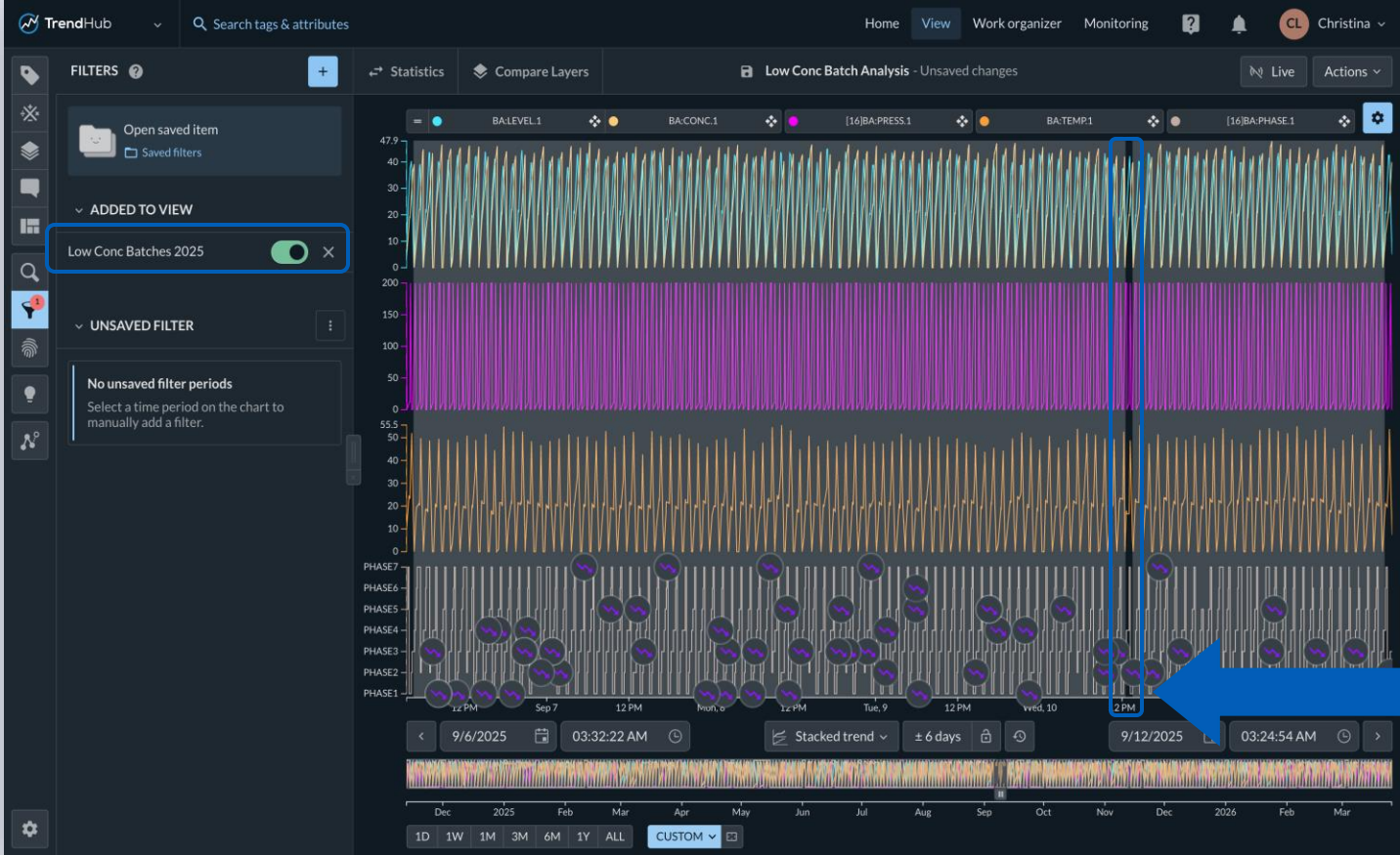
EVENT CLARITY



Christina Linne

Head of Product Marketing

EVENT CLARITY COLLAPSED PLOTTING

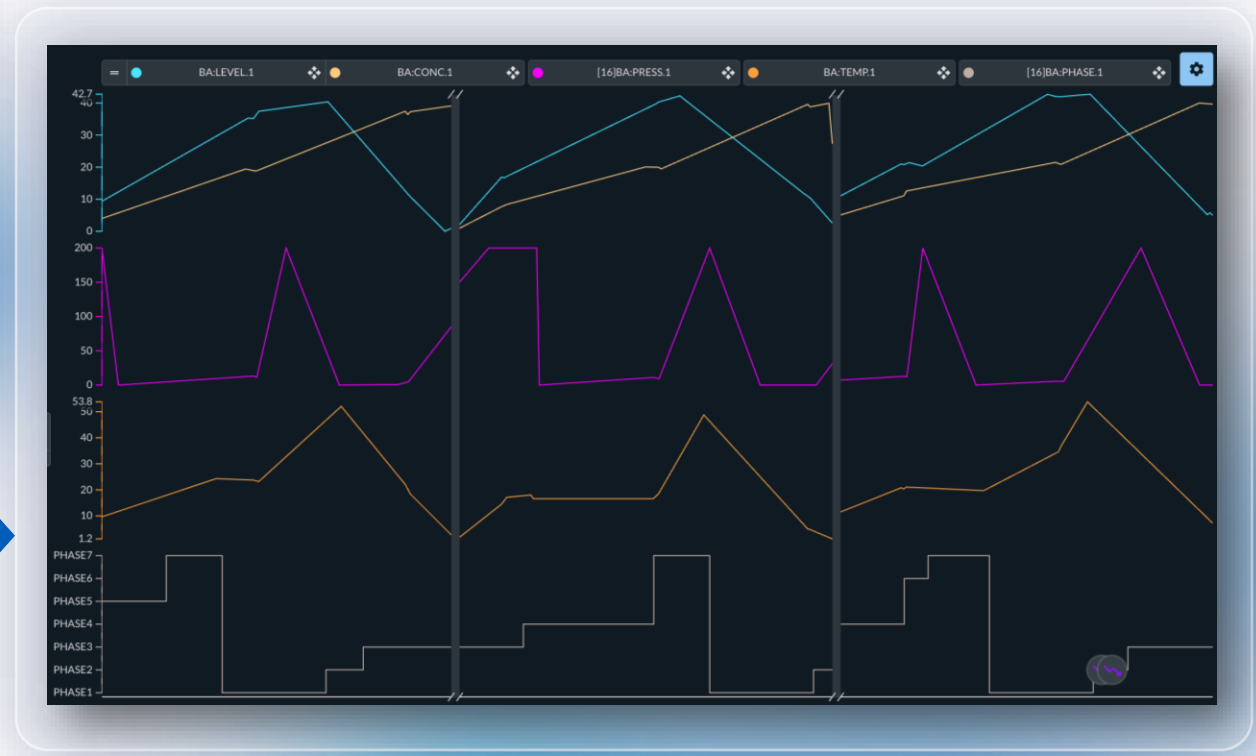
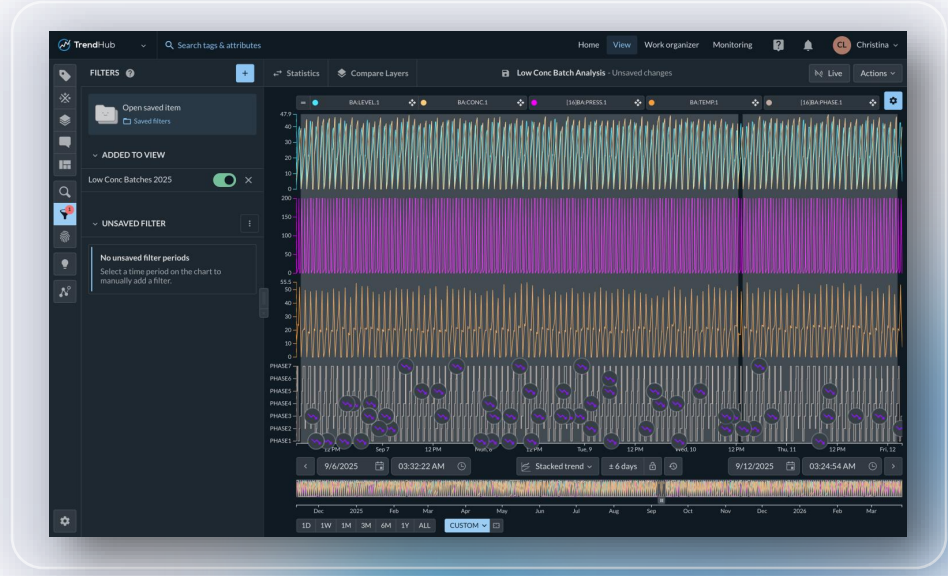


Unfiltered periods



EVENT CLARITY COLLAPSED PLOTTING

View tag behavior in
greater detail



Focus only on
periods of interest





EVENT CLARITY CONTEXT CUSTOMIZATION

**Align layout with
to way of working**
label & assign field order

Configure Autoclave Cycle

VISUALIZATION

Icon: Arrows--round Color: Green

CONTEXT FIELDS

- Display: Set as label, Required, Read-only
- Line: Set as label, Required, Read-only
- QA: Set as label, Required, Read-only

+ Add context field

OPTIONS

- Approvals available
- Turn on history

Cancel Save

Ensure data fidelity
Require and lock fields





EVENT CLARITY CONTEXT CUSTOMIZATION

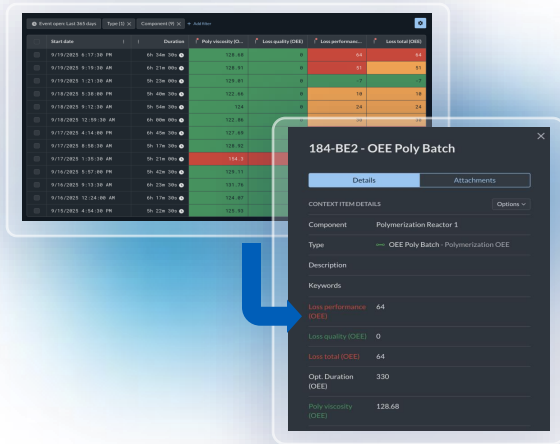
The screenshot shows a data table with columns: Start date, Duration, Poly viscosity (OEE), Loss quality (OEE), Loss performance (OEE), and Loss total (OEE). The table contains 15 rows of data. A modal window titled "184-BE2 - OEE Poly Batch" is open, showing details for the event selected in the table. The modal has tabs for "Details" and "Attachments". The "Details" tab is active, showing "CONTEXT ITEM DETAILS" with an "Options" dropdown. The details include:

- Component: Polymerization Reactor 1
- Type: OEE Poly Batch - Polymerization OEE
- Description:
- Keywords:
- Loss performance (OEE): 64
- Loss quality (OEE): 0
- Loss total (OEE): 64
- Opt. Duration (OEE): 330
- Poly viscosity (OEE): 128.68

Carry conditional formatting
when diving deeper



EVENT CLARITY CONTEXT CUSTOMIZATION



**Straightforward view
configuration
with streamlined field
filtering**

Event open: Last 365 days Type (4) × Component (9) × + Add filter

	Start date	+ Duration	viscosity (O...	Loss quality (OEE)	Loss performanc...	Loss total (OEE)
<input type="checkbox"/>	9/19/2025 6:17:30 PM	+ Keyword	128.68	0	64	64
<input type="checkbox"/>	9/19/2025 9:19:30 AM	+ Type	128.91	0	51	51
<input type="checkbox"/>	9/19/2025 1:21:30 AM	+ Current state	129.01	0	-7	-7
<input type="checkbox"/>	9/18/2025 5:38:00 PM	+ Other properties	122.66	0	10	10
<input type="checkbox"/>	9/18/2025 9:12:30 AM	CONTEXT FIELDS	124	0	24	24
<input type="checkbox"/>	9/18/2025 12:59:30 AM	Search	122.86	0	30	30
<input type="checkbox"/>	9/17/2025 4:14:00 PM	+ Aggregation*	127.69	0	76	76
<input type="checkbox"/>	9/17/2025 8:58:30 AM	+ Availability	128.92	0	-12	-12
<input type="checkbox"/>	9/17/2025 1:35:30 AM	+ Calc Value	154.3	330	-9	321
<input type="checkbox"/>	9/16/2025 5:57:00 PM	+ Loss Code	129.11	0	12	12
<input type="checkbox"/>	9/16/2025 9:13:30 AM	+ Loss performance (OEE)	131.76	0	54	54
<input type="checkbox"/>	9/16/2025 12:24:00 AM	On 17m 30s	124.07	0	48	48
<input type="checkbox"/>	9/15/2025 4:54:30 PM	5h 22m 30s	125.93	0	-8	-8

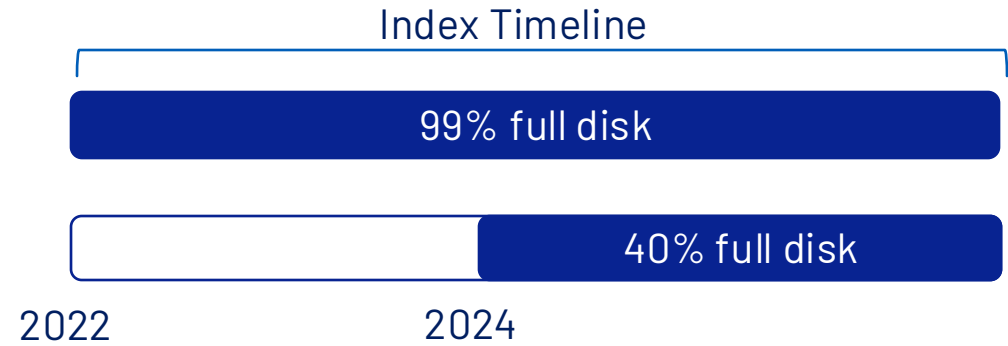


RESOURCE MANAGEMENT



RESOURCE MANAGEMENT INDEX UPDATES

Free disk space with updated horizon



- •
- •
- •
- •

Manage connection or instrument errors

Efficient index corrections available through API



- •
- •
- •
- •

CONFIGURATION & DEPLOYMENT MODERNIZATION



Tim Haselaars

Product Manager



ECOSYSTEM

Plant Integration V5 – Generally Available



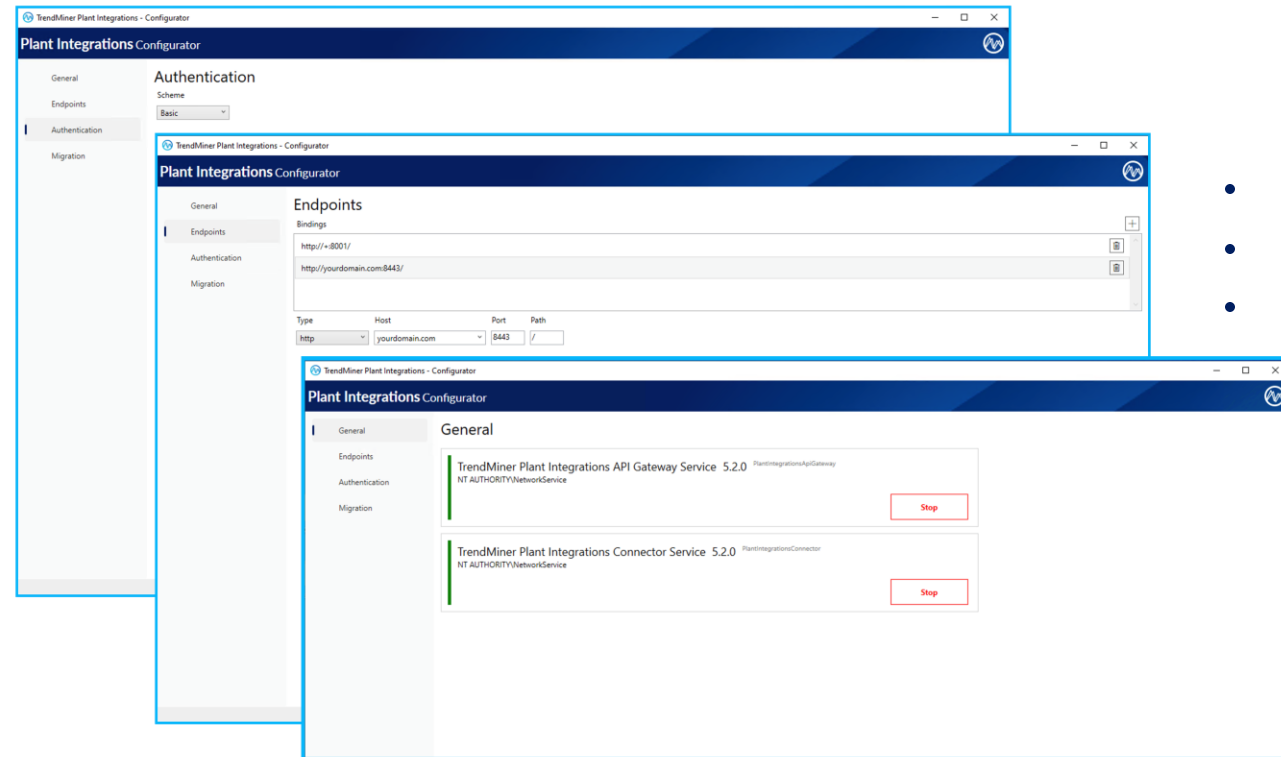
PlantIntegrations

GA Version

Features:

- Standalone deployment (No IIS dependency)
- Centralised configuration
- HTTPS encryption & Basic Authentication
- Fast performance & Future foundation

→ **Simpler to deploy, secure by default, ready to scale**





SMTP MODERNIZATION

Features:

- Extended SMTP settings
- Modern authentication & encryption options
- Streamline SMTP configuration

➔ **Reliable notifications with modern security**

The screenshot displays the EdgeManager web interface for SMTP configuration. On the left is a navigation sidebar with categories: DASHBOARD, SERVICES, DIAGNOSTICS, MANAGEMENT, BACKUP AND RESTORE, SECURITY, and SETTINGS. The main panel is titled 'SMTP configuration' and contains the following fields:

- E-Mail Server:** smtp.gmail.com
- Port:** 587
- From E-Mail Address:** jane.doe@trendminer.com
- Username:** jane.doe@trendminer.com
- Password:** Set new password
- Encryption:** SSL

Buttons for 'Send email test' and 'Save' are located at the bottom of the configuration form.

PLATFORM UPDATES



PLATFORM UPDATES

notices

MLHub *END OF LIFE*

MLM tags

- Unsupported from 2026.R1
- Sunset by 2026.R3

MLHub *DEPRECATION*

MLHub Notebooks

- Python Kernel
- Sunset by 2026.R2



notices

canary *DEPRECATION*

Canary

- Sunset Canary v2023
- from 2026.R3

H *DEPRECATION*

Honeywell PHD

- Sunset R4.10
- from 2026.R3

GE *DEPRECATION*

Proficy

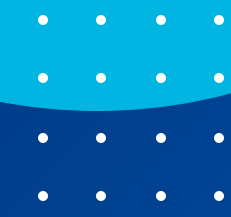
- Sunset 7.0 SP4 & 8.1
- from 2026.R3

AVEVA *DEPRECATION*

Aveva PI

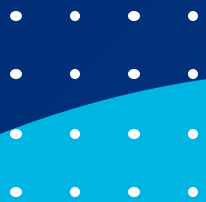
- Sunset PI AF SDK 2010
- R3+ & 2017 R2 SP1
- from 2026.R3





Q&A

Will start shortly





EVENTS

EVENT

Meet us at AVEVA World 2026

May 19-21, 2026

Milan (IT), Allianz MiCo

Visit our booth and meet the
TrendMiner team



| Silver Sponsor

AVEVAWORLD

TRENDLAB 2026

23 & 24
SEPTEMBER

Europe
Eindhoven, NL

7 & 8
OCTOBER

Americas
Houston, USA





HAVE A BRIGHT IDEA FOR TRENDMINER?

- Sign up and login at community.trendminer.com
- Wait while you get verified as a customer
- Get access to the Product Ideas section
- Share your Product Idea
- Explore other process experts' ideas
- Vote for the best ones





Q&A

2026.R1



Available now